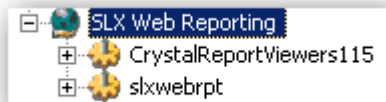


Fix for Deploying a Stand-Alone Web Reporting Portal

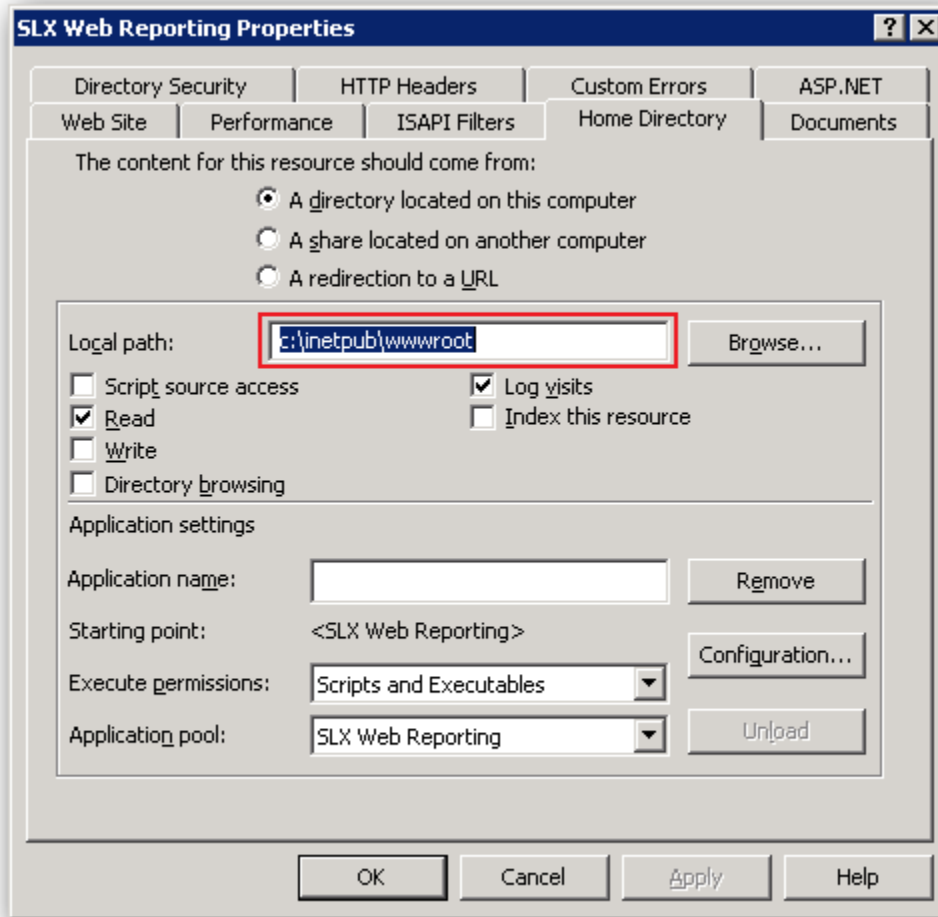
Applies to Sage SalesLogix 7.5.4

1. Open IIS Manager to manage the SLX Web Reporting web site.
2. Select the SLX Web Reporting web site.

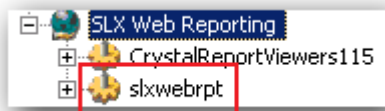


3. From the Action menu select Stop.
4. From the Action menu select Properties and then select the Home Directory tab.
5. Change the "Local path" so that it points to the root of the location where the SLXWEBRPT portal should be deployed, and click OK. Important: the root path should be the full path to slxwebrpt [minus] the slxwebrpt name (e.g. "C:\inetpub\wwwroot"). *If the Inheritance*

Overrides dialog is displayed click OK without selecting any child nodes.

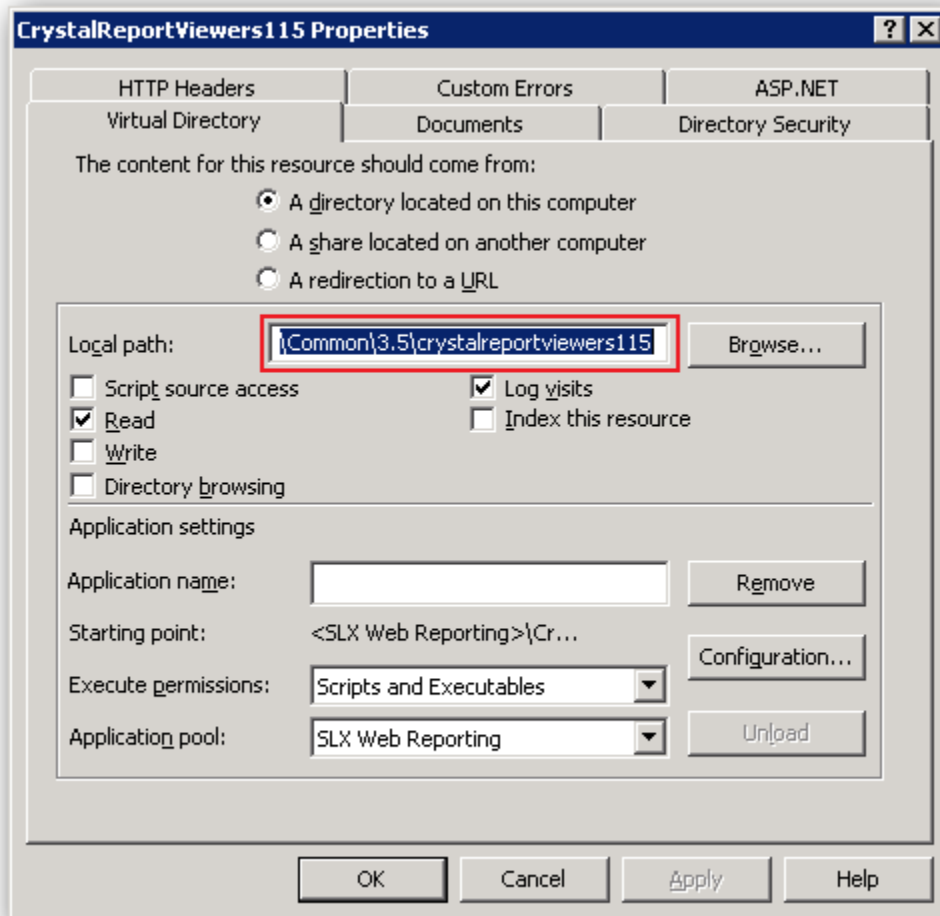
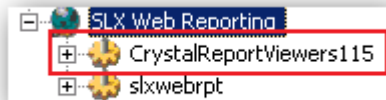


6. Select the SLXWEBRPT web application.



7. From the Action menu select Delete and then Yes.

8. Display the CrystalReportViewers115 web application properties and confirm that the "Local path" for the Virtual Directory points to the location where the Crystal Report portal files have been installed (e.g. "C:\Program Files\Business Objects\Common\3.5\crystalreportviewers115"); make any changes and click OK.



9. Launch Application Architect and deploy the Web Reporting portal to the location and port defined for the SLXWEBRPT web application.
10. Select the SLX Web Reporting web site.



11. From the Action menu select Start.